



GLASS PACKAGE STEP RECOVERY DIODE

DESCRIPTION:

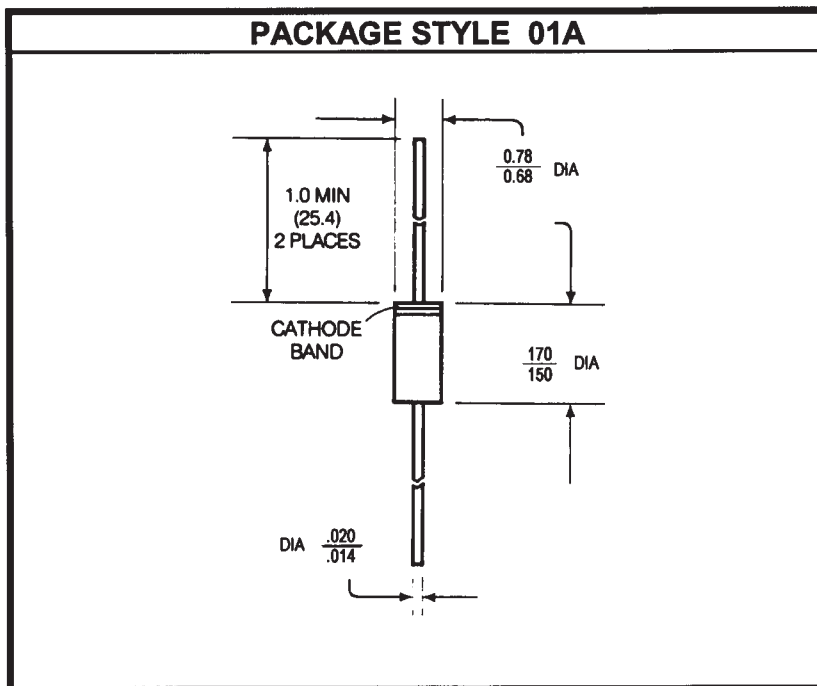
The **ASRD 700** Series of Step Recovery Diodes are Designed for General Purpose VCO and Sampler Applications.

FEATURES INCLUDE:

- Transition Time as Low as **70 pS**
- Hermetic Glass Package

MAXIMUM RATINGS

I_F	50 mA
V_R	UP TO RATED V _{BR}
P_{DISS}	290 mW
T_J	-65 °C to +200 °C
T_{STG}	-65 °C to +200 °C
θ_{JC}	0.6 °C /mW



STATIC ELECTRICAL CHARACTERISTICS T_C = 25 °C

SYMBOL	TEST CONDITIONS		MINIMUM	TYPICAL	MAXIMUM	UNITS
V_{BR}	I _R = 10 μA	ASRD 703	70			V
		ASRD 715	50			
		ASRD 725	45			
		ASRD 733	25			
		ASRD 740	15			
		ASRD 751	15			
		ASRD 753	25			
C_{J6}	V _R = 6 V	f = 1 MHz	ASRD 703		6.0	pF
			ASRD 715		4.0	
			ASRD 725		2.0	
			ASRD 733		1.6	
			ASRD 740		0.6	
			ASRD 751		0.65	
			ASRD 753		0.4	

ADVANCED SEMICONDUCTOR, INC.



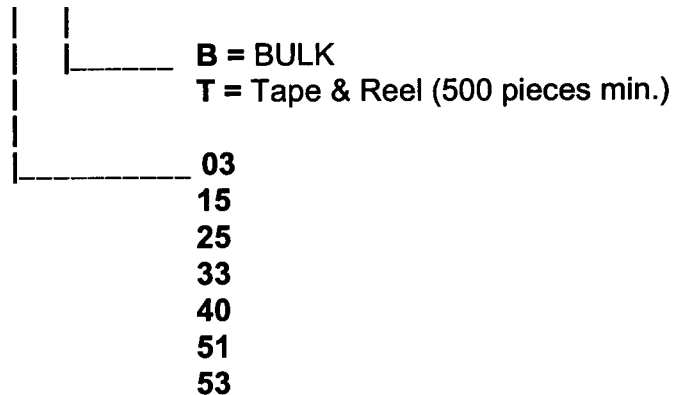
GLASS PACKAGE STEP RECOVERY DIODE

DYNAMIC ELECTRICAL CHARACTERISTICS $T_c = 25^\circ\text{C}$

SYMBOL	TEST CONDITIONS			MINIMUM	TYPICAL	MAXIMUM	UNITS
τ	$I_F = 10\text{ mA}$	$I_R = 6\text{ mA}$	ASRD 703	200			nS
			ASRD 715	100			
			ASRD 725	30			
			ASRD 733	10			
			ASRD 740	10			
			ASRD 751	10			
			ASRD 753	10			
			T_f	$V_R = 7\text{ V}$	$I_F = 3\text{ mA}$	ASRD 703	
ASRD 715		320					
ASRD 725		160					
ASRD 733		90					
ASRD 740		75					
ASRD 751		100					
ASRD 753		95					

ORDERING INFORMATION:

ASRD 7XXB





GLASS PACKAGE STEP RECOVERY DIODE

CROSS REFERENCE

HP P/N	ASI P/N
5082-0151	ASRD 751
5082-0153	ASRD 753
5082-0803	ASRD 703
5082-0815	ASRD 715
5082-0825	ASRD 725
5082-0833	ASRD 733
5082-0840	ASRD 740